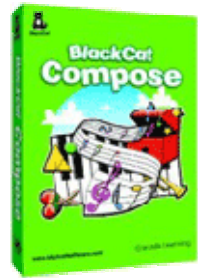


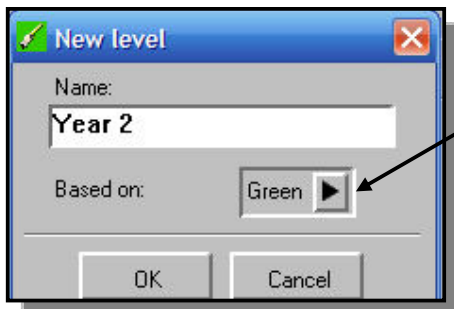
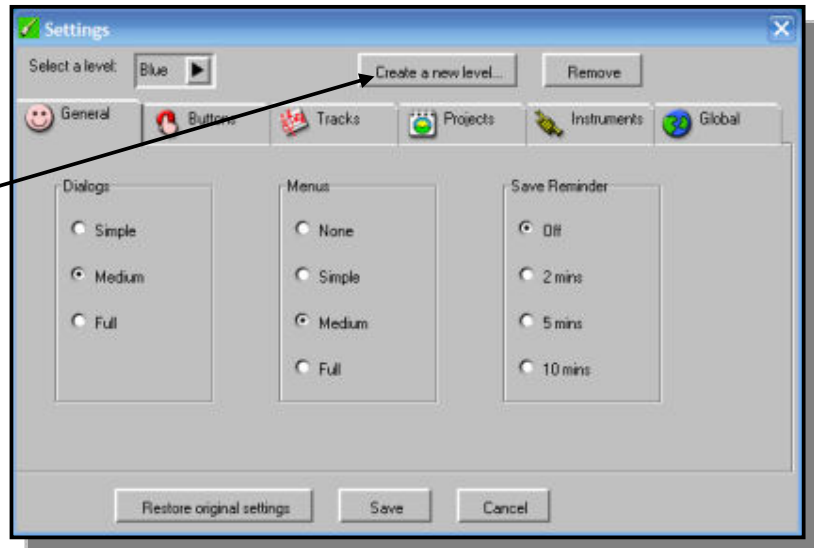
Making a Customised Level in Black Cat Compose for Year 2



To ensure appropriate progression, it is useful to create a customised level within Black Cat Compose for pupils in Year 2, particularly if they have already had experience using the Yellow and Green Levels previously.

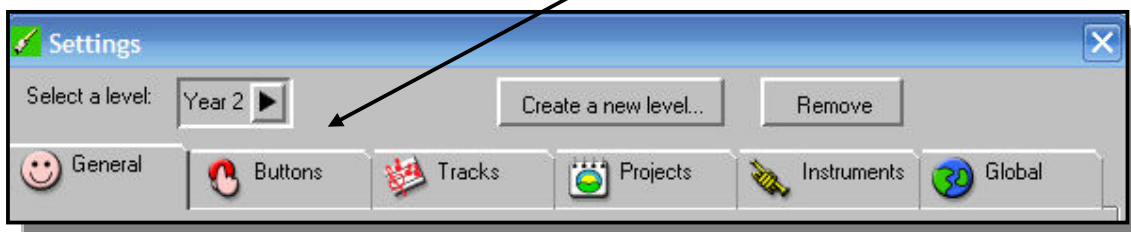
Load the program. Holding down the Shift, Control and T keys on the keyboard will open up the Settings window.

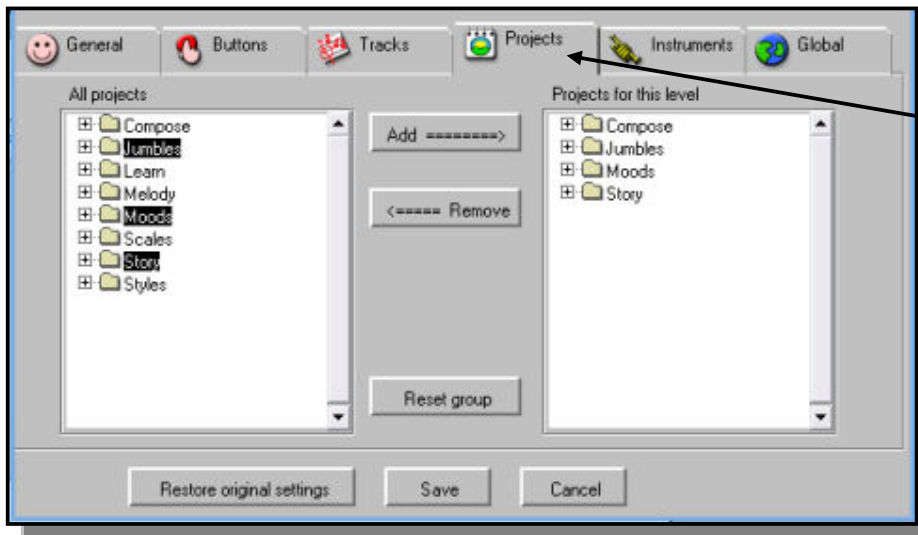
Click on the **Create a new level** button.



Type in Name: **Year 2**
Use the arrow to select Based on **Green** level.
Click on OK.

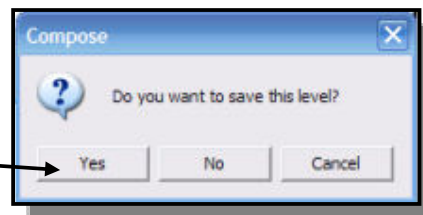
Click on the **Buttons** Tab.
Click to Select the Picture Icon.





- Click on the **Projects** Tab
- Click to highlight **Jumbles**
Moods and **Story**
- Click on **Add =====>**
- Click on **Save.**

A dialogue box will open
Click on **Yes** to save your
custom level.



Your custom Level has now been set up and saved.

To open your Custom Level

Load the program
Click on the Treasure chest icon to choose the level.



The Level window will open
Click on Custom level.



Highlight Year 2
Click OK.



A guide to the other levels for progression

Yellow – Early Years	Blue – Lower Juniors
Green – Year 1	Red – Upper Juniors